



Rabbit anti Notch 1 Polyclonal Antibody

Alternative Name(s): NOTCH1; Notch homolog

Order Information

- **Description:** Notch 1
- **Catalogue:** 620-600
- **Lot:** See label
- **Size:** 100ug/200ul
- **Host:** Rabbit
- **Clone:** nan
- **Application:** IHC(P), WB
- **Reactivity:** Hu

ANTIGEN PREPARATION

A synthetic peptide derived from C-terminus of human Notch 1.

BACKGROUND

The 280-330kDa Notch protein is a single transmembrane receptor which is expressed on a range of cells including hematopoietic cells in mouse fetal liver, adult thymus and bone marrow. These proteins have been found to be overexpressed or rearranged in human tumors. It functions as a receptor for membrane-bound ligands Jagged1, Jagged-2 and Delta1 to regulate cell-fate determination. Following ligand binding, Notch 1 is cleaved in the transmembrane domain, releasing the Notch intracellular domain (NICD) to translocate to the nucleus, where it plays a role in the modulation of gene expression. Notch1 plays a role in embryonic development and tissue homeostasis in the adult. Recent work has suggested a further role for this receptor in the regulation of lymphopoiesis and myelopoiesis.

PURIFICATION

The Rabbit IgG is purified by Epitope Affinity Purification

FORMULATION

This affinity purified antibody is supplied in sterile Phosphatebuffered saline (pH7.2) containing antibody stabilizer

SPECIFICITY

This antibody recognizes ~275 kDa of human Notch1 protein. The other species are not tested.

STORAGE

The antibodies are stable for 24 months from date of receipt when stored at -20oC to -70oC. The antibodies can be stored at 2oC-8oC for three month without detectable loss of activity. Avoid repeated freezing-thawing cycles.

APPLICATIONS/SUGGESTED WORKING DILUTIONS*

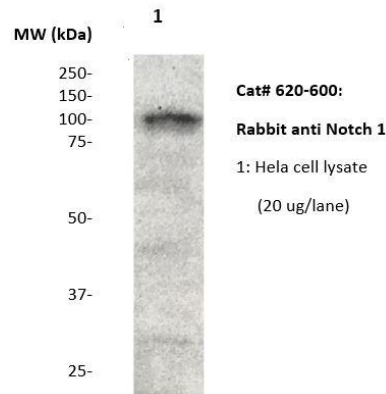
- Western Blot: 0.1-1 µg/ml
- ELISA: 0.01-0.1 µg/ml
- Immunoprecipitation: 2-5 µg/ml
- IHC: 2-10 µg/ml
- Flow cytometry: Not tested
- Molecular Weight: >250
- Positive Control: Kidney Tissue
- Cellular Location: Cell Membrane

*Optimal dilutions should be determined by researchers for the specific applications.

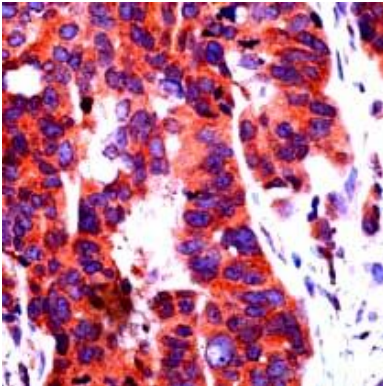
FOR RESEARCH USE ONLY.

AbboMax, Inc 2528 Qume Drive, Suite 8, San Jose, California 95131, USA
1 408-573-1898 (Tel). 1 408-573-1858 (Fax). www.abbomax.com info@abbomax.com

DATA ATTACHMENTS



Western Blot: The whole lysate derived from HeLa (20 ug/lane) immunoblotted by Rabbit anti – Notch-1(Cat# 620-600) at 1:500. Observed a major immunoreactive band at molecular weight ~120 kDa.



Immunohistochemistry: The human ovary carcinoma (FFPE) stained with Rabbit anti Notch 1 antibody (Cat#620-600) at 1:200. (Note: formalin-fixed, paraffin-embedded sections need 15 minutes heat-induced epitope retrieval in 10 mM citrate buffer, pH 6.0, and 30 minutes incubation at room temperature with the primary antibody.)

REFERENCES

FOR RESEARCH USE ONLY.